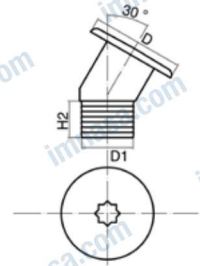


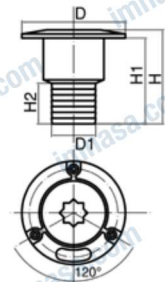
Tapones / Nables / Deck Fills / Tampas

REF.	Mod	D1	D	H2
41252077	Fuel	38	88	35
41252078	Fuel	50	88	35
41252079	Water	38	88	35
41252080	Water	50	88	35
41252081	Diesel	38	88	35
41252082	Diesel	50	88	35
41252083	Waste	38	88	35
41252084	Waste	50	88	35



Tapón en latón cromado.
Nable en laiton chromé.
Deck fill in chromed brass.

REF.	Mod	D1	D	H	H1	H2
41252088	Fuel	38	89	81	74	35
41252089	Fuel	50	89	81	74	35
41252090	Water	38	89	81	74	35
41252091	Water	50	89	81	74	35
41252092	Diesel	38	89	81	74	35
41252093	Diesel	50	89	81	74	35
41252094	Waste	38	89	81	74	35
41252095	Waste	50	89	81	74	35




Tapón en latón cromado.
Nable en laiton chromé.
Deck fill in chromed brass.

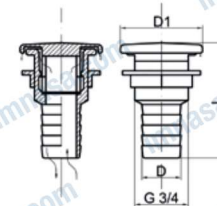
REF.		
41252087		135x35mm.


Llave octogonal de fibra de vidrio
con empuñadura ergonómica.
Clé octogonale en fibre de verre
avec poignée ergonomique
Octogonal fiberglass key with ergonomic grip.



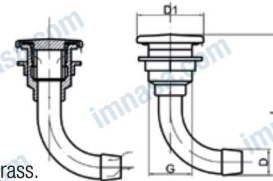
REF.	G	D	D1	L	
41252010	3/4"	14	40	57	150g
41252011	3/4"	19	40	57	150g


Respiradero en latón cromado.
Event en laiton chromé.
Through-hull vent in chromed brass.



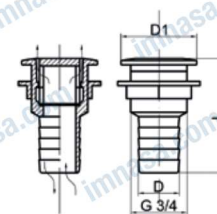
REF.	G	D	D1	L	
41252012	3/4"	16	40	89	190g
41252013	3/4"	19	40	89	190g


Respiradero en latón cromado.
Event en laiton chromé.
Through-hull vent in chromed brass.



REF.	G	D	D1	L	
41252014	3/4"	16	35	54	90g
41252015	3/4"	19	35	54	90g

Respiradero en latón cromado.
Event en laiton chromé.
Through-hull vent in chromed brass.



REF.	G	D	D1	L	
41252016	3/4"	16	35	54	130g
41252017	3/4"	19	35	54	130g

Respiradero en latón cromado.
Event en laiton chromé.
Through-hull vent in chromed brass.

